

GEOGRAPHY

THE GRADUATE SCHOOL OF GEOGRAPHY
AT CLARK UNIVERSITY



WHERE'S YOUR WORLD? | SPRING 2019

NEWS CONTENTS

GRADUATE SCHOOL OF GEOGRAPHY

Jefferson Academic Center 220
Clark University | 950 Main Street
Worcester, MA 01610

Phone 508.793.7336

Fax 508.793.8881

Email: geography@clarku.edu

clarku.edu/departments/geography

GSG CONTACTS

Dr. Deborah Martin
Director

Dr. Karen Frey
Associate Director

Christine Creelman
Department Administrator

Rachel Levitt
Program Administrator

Beth Nugent
Office Coordinator

Meredith King
Associate Director,
Content Marketing

Newsletter Editor:
Rachel Levitt

Newsletter Designer:
Audriana Esperat (BA '19),
Student Media Content Editor/
Graphic Designer in Geography

View this newsletter (and others)
online at: [clarku.edu/departments/
geography/news-and-events/news-
letters/](http://clarku.edu/departments/geography/news-and-events/newsletters/)

Page 03

DIRECTOR'S WELCOME

- A note from our Director, Professor Deborah Martin

Page 04

FACULTY NEWS

- Faculty news and updates
- 2019 Faculty retirements

Page 05

DOCTORAL NEWS

- Welcoming our incoming doctoral cohort (Fall 2019)
- Spring 2019 milestones
- Doctoral student research funding

Page 06

UNDERGRADUATE NEWS

- Practicing Geography Week recap
- Undergraduate news and updates
- Honors research in Geography

Page 07

ALUMNI NEWS

- GIS alumni feature: Shaimaa Ahmed
- Alumni careers & updates

Page 08

AAG ANNUAL MEETING

- AAG specialty group awards and competition winners
- Women in Economic Geography, social hour feature
- Photo album from AAG 2019 (Washington, DC)

Page 10

COMMENCEMENT

- Congratulations to the Class of 2019!
- Photo album from the "Champagne & Strawberries" reception

Page 12

DEPARTMENTAL UPDATES

- Welcoming Beth Nugent, Office Coordinator
- GSG website re-design
- Fall 2019 calendar



/ClarkUniversityGeography



@clarkgeography



WELCOME

A NOTE FROM GSG DIRECTOR, PROFESSOR DEBORAH MARTIN

Dear Geography Friends,

There is an oft-intoned saying, “change is the only constant,” that feels especially relevant this past year, and going into the near future. Most of the time, daily life tends to exert habits and rhythms such that, it feels as though things in life and at the department stay pretty much the same. We have an annual department retreat when faculty discuss some of the same issues, and department metrics, every year. We each have our suite of courses, so that, while there is some change from semester to semester, there is also a certain rhythm. Students do change, but many of our interactions with them, graduate and undergraduate, have a constancy and familiarity: advising meetings about papers, theses, or dissertations; and advising meetings about classes and plans. Social gatherings such as the welcome back potluck, or our post-graduation celebration with families; the faces may change, but the rituals are the same. As a department, we have a rhythm of monthly meetings, and a series of colloquia every year. The visitors whom we host change, but the structures of interactions are remarkably similar.

Change might be a constant, but most of the time we feel very much in our daily routines, until we have an opportunity to look back after several years have passed, and reflect on what changed. There are, nonetheless, moments for individuals and for collective institutions like the Graduate School of Geography, when “change” is evident, visible, and remarked. Two examples are new hires, and retirements. Over the last three academic years, we have hired four new assistant professors (Asha Best, Youjin Chung, Lyndon Estes, and Florencia Sangermano) and seen the departures (by retirement) of another four (Jody Emel, Dick Peet, Sam Ratick, and

Dianne Rocheleau). We have one additional upcoming retirement (Ron Eastman, December 2019). Collectively, that’s a tremendous amount of change over a pretty short time period! These changes do not simply mean that we have a different collection of people who make up our faculty; we have different research interests and expertise, different life experiences, and different perspectives. These differences will resonate and shape the collective understandings of “who” and “what” are the GSG.

Fostering our attention to who and what we are, collectively, has been an external review of the department (a visit and assessment of the department by three geographers from other institutions across the country). Late last fall and into the spring semester, we undertook a department self-study, in preparation for the review that occurred in April. Although the regular busy-ness of the academic year meant that our self-study reflections were more abbreviated than we would have liked, the entire review experience was an important exercise. The review report will help to launch us, collectively, on a series of discussions about who we are as a collective group of researcher-teachers in a School of Geography in 2019 and beyond. I expect you will see subtle evidence of these conversations, and maybe even, changes, over the upcoming years.

In the meantime, enjoy the warmth and slowed pace that marks July, and I hope you take a moment to see what GSG student and faculty have been up to over the last several months. I wish you a restful and restorative summer!

- Deborah Martin, Director



FACULTY NEWS

FACULTY RETIREMENTS

This spring, we said goodbye to two retiring GSG faculty: **Professor Richard (Dick) Peet** and **Professor Sam Ratick**. The GSG extends a very big congratulations to both, and we wish them many relaxing years to come!



Richard Peet joined the GSG in 1967 as an Assistant Professor. Professor Peet's areas of research include: Critique of Neo-Liberal Development Theory; Globalization, Global Governance Institutions; Economic Policy, Financial Crisis; Geography of power; Global political ecology; Economic Policy in India; Global political ecology; Consciousness, rationality and ideology; semiotics; philosophy, theory, geographic thought.



Sam Ratick came to Clark University in 1987. In addition to having a joint faculty appointment in GSG and IDCE, he also served as Director of the George Perkins Marsh Institute and its predecessor, the Center for Technology, Environment, and Development (CENTED). Professor Ratick's focuses on research, advising and teaching in the development and use of analytical methods and mathematical models for: environmental assessment and policy; resource management; and risks and hazard assessment. Specific research areas include: spatial analysis and geographic information science, risk analysis and management, logistics, transportation, location-allocation, impact assessment and resource management.



We also extend a big congratulations to **Professor Ron Eastman** who taught his last class at the end of the spring semester, as he enters into phased-retirement (retiring in December 2019). Ron Eastman joined the GSG in 1981, and has since served as department Chair (1998-2002), as well as Director of Clark Labs (since 1991). His research spans geographic information systems, earth system informatics, conservation GIS, remote sensing, and cartography.

JAMES MCCARTHY APPOINTED AS LASKOFF PROFESSOR

President David Angel has appointed **Professor James McCarthy** as the Leo L. and Joan Kraft Laskoff Professor in Economics, Technology and Environment. This appointment commenced June 1, 2019 and continues for a four-year term through May 31, 2023. Congratulations, James!

CLIMATE AND LAND USE ALLIANCE REPORT (CLUA)

Climate and Land Use Alliance grants are now published and posted on the CLUA website, [here](#). These studies were carried out by Clark University from mid-2016 to early 2018 together with the organizations PRISMA (El Salvador), CASA (Brazil) and Samdhana Institute (Indonesia). Other publications linked to this are this [PNAS](#) paper (Proceedings of the National Academy of Sciences of the United States of America): *Resource extraction and infrastructure threaten forest cover and community rights* ([view here](#)), and a few

papers in this special edition issue: *Mega-Projects, Contentious Action, and Policy Change in Latin America* ([view here](#)). Several Clark/GSG faculty and students were involved in these publications, including **Professor Anthony Bebbington**, **Professor John Rogan**, and Professor Denise Humphreys Bebbington. Congratulations to all involved!

REUNIONS AT THE GLP OPEN SCIENCE MEETING

This spring, a few GSG faculty attended the [Global Land Programme \(GLP\) Open Science Meeting](#) in Bern, Switzerland (April 2019)! Below, **Professor Gil Pontius** reunites with his first research assistants who earned their doctorates through the GSG: Pablo Pacheco (Ph.D. '05) and Laura Schneider (Ph.D. '04). Also pictured below are



Professors Rinku Roy Chowdhury, Gil Pontius, and Lyndon Estes,

with Mateus Bastistella (left), researcher in the Brazilian government's Agricultural Research Corporation (EMBRAPA), and faculty member of the University of Campinas (director general of EMBRAPA's satellite monitoring program over 2009-2015), and Tom Evans (right), Professor of Geography at the University of Arizona, and a long-time collaborator in Lyndon's African research projects..





DOCTORAL NEWS

GSG WELCOMES A NEW DOCTORAL COHORT OF 12 FOR FALL 2019

The GSG is thrilled to welcome 12 incoming doctoral students who will join the department in late August 2019 for their first year in the Ph.D. program. This cohort comes from near and far; some are currently or have previously been Clark students, and many newcomers were able to visit the department during this past academic year. Our new cohort members are:

- Thomas Bilintoh
- Andrea Cabrera Roa
- William Cruice
- Maria del Pilar Delpino Mari-mon
- Hillol Dutta
- María José Guillén Araya
- Ashley Hoffman
- Emily Holloway
- Haruka Nagano
- Julia Wagner
- Li Xi
- Sitian Xiong

The GSG extends a big welcome to these students, and looks forward to seeing everyone in a few months!

If you are interested in applying for the Ph.D. program for Fall 2020 program entry, please contact Rachel Levitt (Program Administrator) at RLvitt@clarku.edu to learn more.

SPRING 2019 MILESTONES

In Spring 2019, 21 students completed doctoral program milestones; one of our largest groups to do so in one semester! Since Janu-

ary 2019, 8 students have defended dissertations, 6 have defended dissertation research proposals, 7 have completed their comprehensive doctoral exams (orals), and 6 will complete all requirements for August 2019 graduation. Congratulations to all!

EDNA BAILEY SUSSMAN GRADUATE RESEARCH FELLOWSHIP AWARDEES

The GSG congratulates this year's group of students whose proposals were funded by the Edna Bailey Sussman Foundation for summer research! Our 6 students are: Michael Cecil, Kelsey Hope, Sarah SanGiovanni, Dan Santos, Mara van den Bold, and Luisa Young. These students will be conducting their funded research this summer, detailed below. We look forward to seeing their results!

Michael Cecil (2nd-year doctoral student). Proposal title: "Integrating In Situ Sensor Data with Remote Sensing and Climate Grids to Forecast Crop Growth". Host institution: Arable Decision Agriculture (Princeton, NJ). Advisor: Lyndon Estes.

Kelsey Hope (MS-GIS student). Proposal title: "Characterizing the 2018 Camp Fire Severity and Dynamics using Satellite Imagery and Field Inventory". Host institution: United States Forest Service (USFS) Pacific Southwest Research Station (Davis, CA). Advisor: John Rogan.

Sarah SanGiovanni (3rd-year doctoral student). Proposal title: "'EcoDistrict Planning' in the Pittsburgh Metro Region: The Sustainability Impacts of Neigh-

borhood-Scale Climate Change Initiatives". Host institution: New Sun Rising (Pittsburgh, PA). Advisors: Deborah Martin, James Murphy.

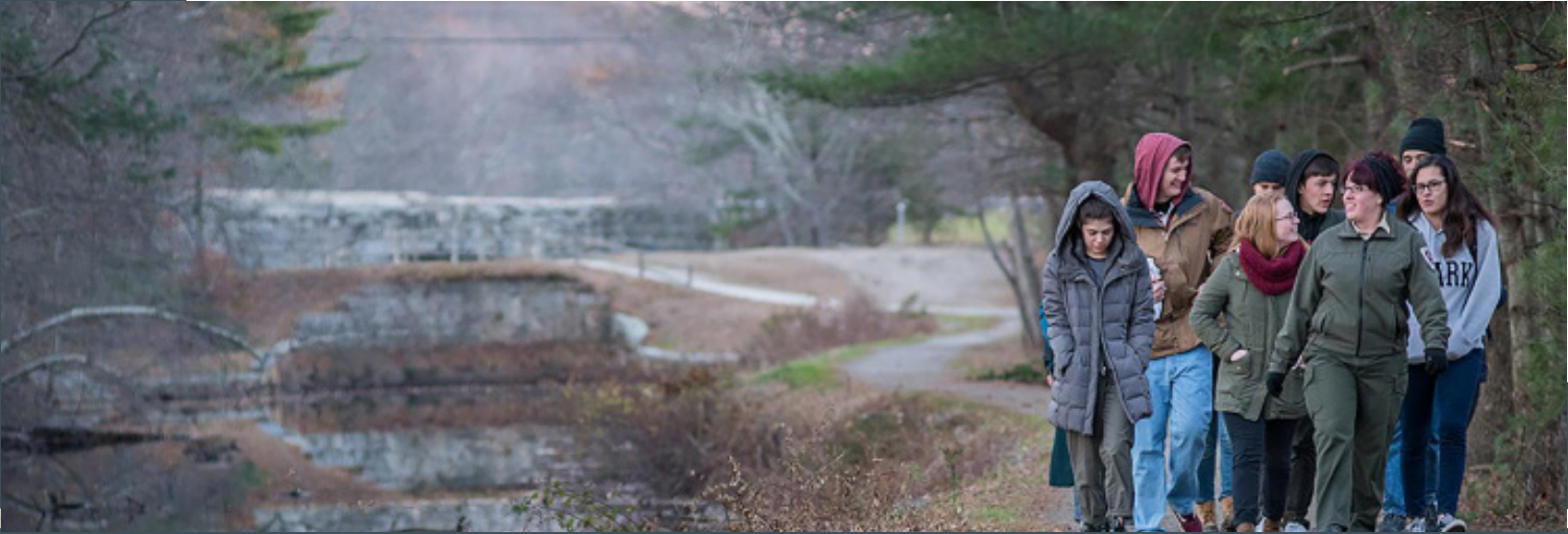
Dan Santos (3rd-year doctoral student). Proposal title: "Investigating Environmental Applications of Biotechnology in Community Science Labs". Host institution: BioCurious (Santa Clara, CA). Advisor: James Murphy.

Mara van den Bold (3rd-year doctoral student). Proposal title: "Examining the policy and funding landscape for climate change mitigation among Washington D.C.-based development organizations". Host institution: International Food Policy Research Institute (IFPRI) (Washington, DC). Advisor: James McCarthy.

Luisa Young (3rd-year doctoral student). Proposal title: "Impacts of a warming Arctic on marine phytoplankton assemblages". Host institution: Oregon State University (Corvallis, OR). Advisors: Karen Frey, John Rogan.

DOCTORAL RESEARCH FUNDING

Our Ph.D. students are extremely successful in securing grants to support their studies and their research. From 2014 to 2018, Ph.D. students secured more than \$1.4 million in grants, often in collaboration with faculty, who provide critical feedback on proposals and write letters of support. To view a list of 2018-19 grants, fellowships, and awards received by doctoral students, visit our website (Research > Ph.D. Research), [linked here](#).



UNDERGRADUATE NEWS

PRACTICING GEOGRAPHY WEEK 2019

This spring, the department held its eighth annual Practicing Geography Week, March 18th—22nd. With a lineup of 9 undergraduate events, students spent the week learning about the various paths one can take with experience in Geography, Global Environmental Studies, or Earth System Science. CUGA hosted a movie night and their annual trivia match, and the week later filled up with an alumni talk and panel, a Neighborhood Walk led by Jack Foley focusing on Main South urban development and community partnerships, and a panel featuring GSG faculty and a Ph.D. student on extractive industries and climate change. Thanks to all who attended!



CLARKNOW FEATURES GSG UNDERGRADS

Check out these recent ClarkNow articles featuring a few of our students:

- In Chile, Max De Faria cultivates his research interests ([link](#))
- Eli Baldwin stalks answers among the corn ([link](#))
- NOAA Fellows work to protect endangered species across the US ([link](#))
- Kaiomi Inniss '19 is hunger's enemy ([link](#))
- First-year students explore sig-

nificance of area's waterways ([link](#))

2018-19 UNDERGRADUATE HONORS RESEARCH

This past semester, 8 students completed honors theses in geography. After spending the academic year developing research and formulating their theses, these students each presented and defended their final research to their faculty advisers and readers to determine the final grade. Many of these students plan to continue into the MS-GIS Accelerated Degree Program next year, and many will work on a continuation of their undergraduate thesis to use in their Master's research. The following students have successfully completed the Honors program, and their theses will be displayed at the end of the hallway on the second floor of Jefferson come the end of Summer 2019:

- **Eli Baldwin**, "Predicting Maize Yield Using High-Resolution Imagery"; Lyndon Estes, adviser
- **Anika Berger**, "Mapping Suitability for Mining-Related Deforestation in Madre De Dios, Peru Through Predictive Modeling"; Florencia Sangermano, adviser.
- **Iolanthe Brooks**, "Prison Transfers and Carceral Logics"; Asha Best, adviser.
- **Jamieson Chaitman**, "Defining the impact of a derived topographical index on mapping mangroves and peatlands in In-

donesia"; Ron Eastman, adviser.

- **Anthony Himmelberger**, "Investigating the Fragmentation of Pacific Walrus Sea-Ice Habitat in the Saint Lawrence Island and Wainwright Regions of the Bering and Chukchi Seas (Alaska) using Landsat Satellite Data"; Karen Frey, adviser.
- **Olivia Landry**, "Assessing the Environmental Factors Associated with Turtle Roadkill in Massachusetts"; Florencia Sangermano, adviser.
- **Andrew Pagan**, "Assessing the impact of established juvenile trees on land surface temperature in Burncoat and Greendale neighborhoods of Worcester, MA"; John Rogan, adviser.
- **Claire Shapton**, "Articulations of Home: Preserving Manufactured Housing in the Gentrifying City"; Deborah Martin, adviser.

APPLYING FOR UNDERGRADUATE HONORS

If you are a current major in Geography or Global Environmental Studies and are interested in pursuing an Honors project for the upcoming academic year, please visit [our website](#) to access the Honors Program Guide for Geography. To apply, please complete the included application and email RLevitt@clarku.edu. If you are a current major in Environmental Science and interested Honors, please email RLevitt@clarku.edu to learn how to apply.

ALUMNI NEWS

GIS ALUM FEATURE: SHAIMAA AHMED SELECTED FOR GLOBAL SPACE CONGRESS



Eng. Shaimaa Ahmed (MA-GIS '08) was selected, and participated in the [global space congress 2019](#) in United Arab of Emirate. She was one out of thirty delegates who received a scholarship to attend the second and third day of the congress. The generous scholarship was donated by [Space Generation Advisory Council](#). Eng. Ahmed 's trip to United Arab of Emirates included visiting touristic places such as the Sheikh Zayed Mosque, the heritage village and Louvre museum in Abu Dhabi.



Eng. Shaimaa Ahmed was among 100 African delegates who participated in the second [African Space Generation workshop](#) in Mauritius. The workshop was organized by Space Generation Advisory council (SGAC) in Support of the United Nations Programme on Space Applications. Together with other 15 delegates from different African countries, they suggested ideas to begin space business and entrepreneurship in Africa. Two delegates of Mauritius and Eng. Ahmed presented the group's recommendations by the end of workshop. After the end of the workshop the group enjoyed a hiking trip in the mountain, visited traditional market and other touristic scenes in Mauritius.

Photos (top): Eng. Ahmed participating in speed mentoring session; (bottom) Eng. Ahmed presenting part of the group's recommendation.

ALUMNI JOB DATABASE

One feature of the GSG's updated website is a newly compiled list of Ph.D. alumni careers. Documenting graduates from the program going back to 1969, this new database is searchable by name, year, and most recently known position held by the alumnus. With this tool, searching for careers of Clark Geography Ph.D. graduates has never been easier! Check it out on our new alumni page, [linked here](#).

CAREERS OF RECENT GRADUATES

- **Saira Khan** (MS-GIS '18, BA '17) -- Imagery Analyst, Signal Program on Human Security and Technology at Harvard Humanitarian Initiative
- **Ali Filipovic** (MS-GIS '18, BA '17) -- Spatial Data Scientist, Fraym (Washington, DC)
- **Anela Layugan** (MS-GIS '18, BA '17) -- Senior Research Staff Assistant on the GRID3 Project, Center for International Earth Science Information Network (CIESIN) at Columbia University
- **Madilyn Jacobsen** (BA '17) -- Transportation Planner II, Transportation Agency of Monterey County (California)
- **William Kutz** (Ph.D. '13) -- Lecturer, Dept. of Geography, University of Cambridge (UK)
- **Young-Long Kim** (Ph.D. '18) -- Research Fellow, Gyeonggi Research Institute (South Korea)
- **Christina Geller** (MS-GIS '14, BA '13) -- Product Development Manager, DigitalGlobe, Maxar (Colorado)
- **Carly Robbins** (MS-GIS '19, BA '17) -- Officer Candidate, NOAA Commissioned Officer Corps (Silver Spring, MD)
- **Chris Knudson** (Ph.D. '16) -- Assistant Professor, Department of Geography and Environmental Studies, University of Hawai'i at Hilo
- **Shirin Esmaeili** (MS-GIS '18, BA '17) -- Operations and Expeditions Coordinator, National Geographic Society
- **Will Heikes** (MS-GIS '18, BA '17) -- Analyst (Analytics & Insights), Zayo Group (Colorado)
- **Yuka Fuchino** (MS-GIS '16, BA '15) -- GIS Specialist, Kleinfelder (Boston, MA)

Tell us what you're up to! Fill out our quick Alumni Survey ([linked here](#)) to let us know about your post-Clark journey.

SUBSCRIBE TO THE GEOG-JOBS EMAIL LIST

Did you know that the GSG has a list-serv for job postings? Subscribe to our geog-jobs email list by emailing RLevitt@clarku.edu to request access and receive notifications of open positions of interest. Jobs sent to this list come from faculty in the department, alumni, and/or agencies who have a connection to Clark Geography, which helps keep the GSG community strong!



AMERICAN ASSOCIATION of GEOGRAPHERS

ADVANCING GEOGRAPHY IN PARTNERSHIP WITH YOU



AAG ANNUAL MEETING

GEOGRAPHY STUDENTS WIN BIG AT AAG MEETING

Every spring, many faculty, graduate and undergraduate geographers pause the busy semester to travel to the AAG (American Association of Geographers) Annual Meeting, held this year in Washington DC (April 3-7). Each year, various AAG specialty groups select recipients for competitions and awards. This year, Clark Geographers took home a number of these prizes. Here are just a few of the AAG 2019 awardees:

Iolanthe Brooks (GEOG, SOC '19) was the undergraduate recipient of the 2019 Paper Competition Award via the AAG Qualitative Research Specialty Group for her paper: "*Queer(ing) carceral geographies: Prison transfers and queer visibility*".

Carly Robbins (MS-GIS '19) won 2nd place in the Innovative Applications of ESRI GIS Technology Poster Competition.

Sam Khallaghi (3rd-year doctoral student) earned 2nd place in the poster competition organized by the GIS and Remote Sensing Specialty groups. Sam's poster, "*Baseline & Transect Method Compared to Polygon Overlay Method to Measure Boundary Change*", showed research

connected with his RA-ship funded by the National Science Foundation.

Yifan Cai (5th-year doctoral student) received 2019 Graduate Student Paper Award from the AAG Asian Geography Specialty Group for her paper, "*International Technology Diffusion, South-South Trade, and Adaptive Capacity: Chinese Mobile Phone Companies in Emerging Markets*". Yifan has also been awarded the Asian Geography Specialty Group Graduate Student Travel Award.

Roopa Krithivasan (4th-year doctoral student) received the 2019 Chimborazo Student Research Grant Award from the AAG Mountain Geography Specialty Group for her research: "*Wildlife as drivers of land change? Applying the Social Ecological System framework to analyze agricultural transitions in a human-wildlife conflict landscape*".

WOMEN IN ECONOMIC GEOGRAPHY SOCIAL HOUR

Clark alums **Renee Tapp** (Ph.D. '18) and **Kelly Kay** (Ph.D. '16), along with GSG Visiting Assistant Professor **Jessa Loomis**, Emily Rosenman (Penn State) and Wanjing Chen (UW-Madison) organized the third annual Women in Economic Geography Social Hour at the 2019 American Asso-

ciation of Geographers Conference in Washington, DC. After attending the 2016 Summer Institute in Economic Geography (SiEG) together, Loomis, Kay and Rosenman, along with Tapp (SiEG 2018) decided to create the social hour in 2017, and were joined by Chen (SiEG 2018) in 2019.

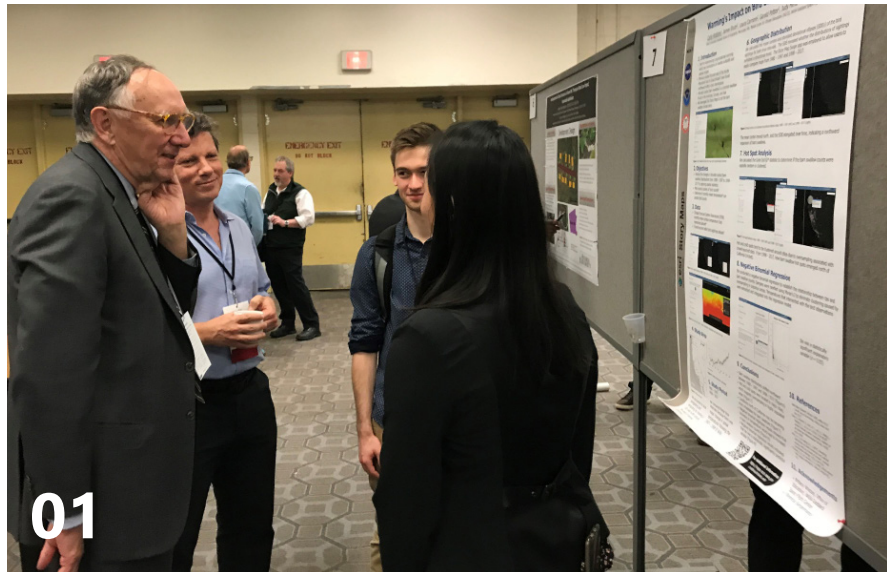
The social hour is a welcoming space where female and non-binary scholars of the economy, broadly understood, can build connections across intellectual traditions, topics of study and theoretical orientations. Over 80 scholars attended this year's social hour on the evening of April 3rd at Mayahuel Cocina Mexicana. Graduate students and faculty at all career stages gathered for lively conversation and enjoyed refreshments provided by Environment and Planning A: Economy and Space (EPA), the Economic Geography Specialty Group (EGSG), the Regional Studies Association and Geographic Perspectives on Women (GPOW).

The organizers hope that this annual social hour helps to expand and energize the subfield of economic geography, a project that Rosenman, Loomis and Kay have explored further in their co-authored essay in EPA (2018) and article in Progress in Human Geography (2019).

AAG ANNUAL MEETING

Photo Album

01 Carly Robbins shares her research with Stefano Crema (Clark Labs), Andy Pagan (GEOG '19), and Jack Dangermond (President, ESRI) during the Innovative Applications of ESRI GIS Technology poster session. Carly was selected for 2nd place in the session's [poster competition](#). Congratulations, Carly!



02 Graduate Admissions recruitment! The Clark table was run by Jerry Czub (Sr. Director of Graduate Enrollment), Maureen Spillane (Asst. Director of International Recruitment), and Rachel Levitt (Program Administrator, GSG) who spoke with prospective graduate students from across the globe.



03 Professors Dick Peet and Rinku Roy Chowdhury catch up with fellow GSG alums Sagie Narsiah (Ph.D. '06) and Assaf Anyamba (Ph.D. '97) in the AAG hotel lobby.





COMMENCEMENT

On Sunday, May 19th, the Graduate School of Geography celebrated graduates across six programs: Geography Ph.D., M.S. in Geographic Information Science (Accelerated Degree Program (ADP) and 2-Year M.S. Program shared with IDCE), and B.A.s in Geography, Global Environmental Studies, and Environmental Science at the annual Champagne & Strawberries reception. The event also included a brief award ceremony, recognizing our undergraduate award recipients for 2018-19 (listed below). Congratulations to all!

PH.D. GRADUATES*

William Collier †

"The Forests Complex: Conservation and Capital in Kenya's Mau Forests"

Laura Sauls †

"Territorial Claims and Climate Change Governance in Mesoamerica"

Kristen Shake †

"Sociolegal Dynamics of Sea Ice in a Changing Arctic Ocean Environment"

Renee Tapp**

"Taxes, Banks, and Renters: Urban Redevelopment in the United States after the 2008 Crisis"

M.A. GRADUATES (EN-ROUTE TO PH.D.)

Benjamin Fash
Patrick Mutegeki
Kristen Shake

MS-GIS ADP GRADUATES

Tyler Anderson †
Meyru Bhanti †
Hannah Corney
Saraneh Fitzgerald †
Carly Robbins
Miles Weule Chandler

MS-GIS GRADUATES

Ayodele Michael Agboola
Oyut Amarjargal
Derek Boland
Erica Carcelen
Carson Hauck
Madeleine Haynes
Andrea Huerfano
Kelly Janus
Piaotian Jin
Daniel Lassila
Chenglin Liu
Boka Luo
Amalia Mendes
Aaron Meneghini
Jonathan Paul
Yi Ru
Alex Shaller
Connor Stephens
Dilli Subedi
Andrew Walz
Dale Watt
Henrik Westerkam
Sitian Xiong
Kaixi Zhang
Mengyi Zhang

BA GRADUATES GEOGRAPHY

Eli Baldwin
Eric Barrese
Iolanthe Brooks
Jamieson Chaitman
Laura Cohen
Joshua DeSouza
Peter Foley
Paul Frissora
Zhaneille Green
Jonathan Gober
Eric Keller
Jack Levine

Krishna Naithani
Melanie Nash
Andrew Pagan
Yeannet Ruiz
Nicole Sandal
Nahrin Sangkagalo
Claire Shapton
Christopher Sturiale
Afriany Ventura
Christina Zymaris

GLOBAL ENV. STUDIES

Anika Berger
Sydney Boardman
Isabelle Costa
Sahil Gangula
Kaiomi Inniss
Devon Miller
Mikela Nolin
Olivia Schwartz
Rebecca Silver
Krissy Truesdale

ENV. SCIENCE (ESS, ES&P, ECB TRACKS)

Olivia Anastasio
Olivia Barksdale
Emma Clemente
Gia Coleman
Adam Converse
Rose Goldberg
Anthony Himmelberger
Joyce Joseph
Maya Kerstetter
Azal Khaled
Brandon King
Chaimaa Medhat
Kendra Melanson
Daniele Michaud
Daniel Oliveira
Jessica Owen
Demi Rodriguez
Emma Russell
Mary-Elise Schiffer
Hanna Shaffer
Isaac Stone
Tyler Sullivan
Colin Tripp
Yunhao Zhang

STUDENT AWARDS

- **Ellen Churchill Semple Award:** Eli Baldwin (GEOG '19)
- **Clark Labs GIS Excellence Award:** Anika Berger (GES '19)
- **NCGE Excellence of Scholarship Award:** Rose Goldberg (ESS '19)
- **Linda Roth Memorial Activist Scholar Award:** Rebecca Silver (GES '19)
- **The Marcia V. Szugda-Emani Memorial Environmental Scholarship Award:** Olivia Barksdale (ESS '19)
- **Global Environment Studies Outstanding Student Award:** Krissy Truesdale (GES '19)
- **Strabo Award:** Kyle Pecsok (GEOG '20)
- **Paul P. Vouras University Award:** Iolanthe Brooks (GEOG & SOC '19)
- **Environmental Science Academic Excellence Award:** Daniel Oliveira (ECB '19), Rose Goldberg (ESS '19)
- **Environmental Science Research Excellence Award:** Anthony Himmelberger (ESS '19)
- **Environmental Science Excellence in Practice Award:** Olivia Barksdale (ESS '19), Kendra Melanson (ESS '19)

† August 2019 degree conferral, awarded upon completion of requirements

* Doctoral graduates (August 2019) not listed above will be listed as the Class of 2020

** Degree conferred December 2018

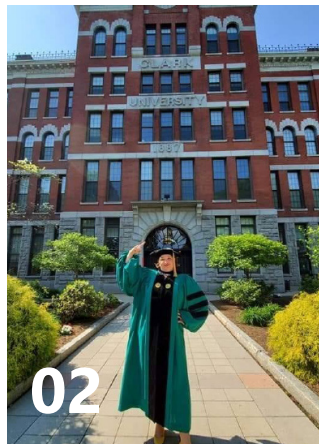
COMMENCEMENT

Photo Album

01 A few of our August 2019 Ph.D. recipients (L-R): Laura Sauls, David Lukens, Will Collier, and Ashley York



02 Dr. Kristen Shake! (August 2019 Ph.D. recipient)



03 Anika Berger (GES '19) receives the Clark Labs GIS Excellence Award at our departmental *Champagne & Strawberries* Reception



04 Olivia Barksdale (ESS '19) receives the Marcia V. Szugda-Emani Memorial Environmental Scholarship Award and poses with alumni and scholarship founder Sri Emani (Ph.D. '01)



05 Rose Goldberg (ESS '19) and Daniel Oliveira (ECB '19), co-recipients of this year's Environmental Science Academic Excellence Award

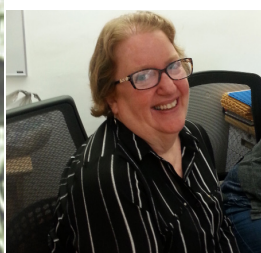




DEPARTMENTAL UPDATES

WE HAVE A NEW OFFICE COORDINATOR!

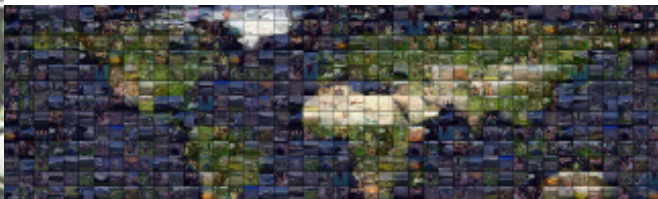
Chris Creelman (Department Administrator) introduces our new Office Coordinator, **Beth Nugent**!



"After a spring-long search, I am very happy to announce that **Beth Nugent** has started as our new office coordinator as of June 3! Beth is very excited to work with us in Geography, and I am thrilled that we now have a full time office coordinator, who comes to us with so much experience at Clark! Beth has worked at the University for 22 years, starting as the switchboard operator and, then, moving on as the office assistant for the COPACE and SED programs.

Beth's ties to Worcester and Clark are multigenerational. She grew up in Worcester and has been involved with Clark since she was little. Her mother worked here, she met her husband here, and all four of her children are Clark graduates! Beth currently lives in the Clark neighborhood in a big old Victorian house full of antiques. When not working, she likes to travel whenever she can and spends a lot of time in Maine and Vermont. Just this year, Beth traveled further afield, visiting Scotland and Spain! The next time you are in the office, please say hello, introduce yourself, and swap some travel stories!

Welcome to the Graduate School of Geography, Beth!"



GSG WEBSITE RE-DESIGN

We are thrilled to announce the launch of our newly re-designed departmental GSG website, which went live in early May! After much collaboration with the departmental Web Committee and staff in the Web Development and Marketing/Communications departments, the new website now offers clear, visual navigation for users to learn about the workings of the Graduate School of

Geography. Featuring new visuals and content put together by these joined teams of faculty, staff, and graduate students, we couldn't be happier with the result. Thank you to all involved, and be sure to check out the new site at clarku.edu/departments/geography!

FALL 2019 CALENDAR

Be sure to check out our website, Facebook page, and Instagram page to learn of upcoming events! Here are a few dates to mark on your calendars for Fall 2019:

- **September 05**
Colloquium Speaker Series
Tony D'Amato (University of Vermont)
12:00-1:15pm, Grace Conference Room (UC)
- **September 26**
Colloquium Speaker Series
Irus Braverman (University of Buffalo)
12:00-1:15pm, Grace Conference Room (UC)
- **October 24**
Colloquium Speaker Series presents the annual Wallace W. Atwood Lecture, featuring Matt Hansen (University of Maryland)
7:00pm, location TBA
- **November 21**
Colloquium Speaker Series
Jen Baka (Penn State)
12:00-1:15pm, Grace Conference Room (UC)
- **December 05**
Colloquium Speaker Series
Jessa Loomis (Clark University)
12:00-1:15pm, Lurie Conference Room (UC)
- **December 09-13**
[AGU Annual Fall Meeting](#)
(American Geophysical Union)
San Francisco, CA

GEOGRAPHY @ CLARK

PHOTOS:

COVER PHOTO

Washington DC cherry blossoms
(Rachel Levitt)

FACULTY NEWS: HEADER

GSG Faculty at the 2018
Department Retreat (Worc. Art Museum)

DOCTORAL NEWS: HEADER

Melishia Santiago, Doctoral candidate
working in Karen Frey's research lab

UNDERGRADUATE NEWS: HEADER

Students from Professor Rinku Roy Chowdhury's GEOG 106
Water in the City course on a field trip

ALUMNI NEWS: HEADER

Clark University, Woodland area
(Rachel Levitt)

DEPARTMENTAL UPDATES: HEADER

Lakeside @ CUGS Field Camp 2018
(Brittany Wheeler)

AAG ANNUAL MEETING: HEADER 1

Claire Shapton (GEOG '19) and
Iolanthe Brooks (GEOG/SOC '19)

HEADER 2

Washington DC cherry blossoms
(Rachel Levitt)

COMMENCEMENT: HEADER

A few 2019 Ph.D. Graduates pictured:
(front row) Kristen Shake, Laura Sauls, Will Collier

HEADER 2

Blossoms at the Lasry Bioscience building
(Rachel Levitt)

BACKGROUND PHOTO (CURRENT PAGE)

Old Orchard Beach, ME
(Rachel Levitt)



CHALLENGE CONVENTION. CHANGE OUR WORLD.

Geography News | Spring 2019
Issue Published July 2019