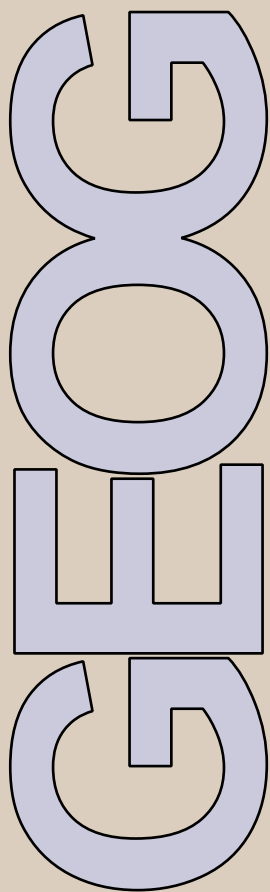


# geography

THE GRADUATE SCHOOL OF GEOGRAPHY AT CLARK UNIVERSITY



WHERE'S YOUR WORLD? | SUMMER 2015



Jefferson Academic Center 220  
Clark University | 950 Main Street  
Worcester, MA 01610

Phone 508.793.7336

Fax 508.793.8881

[Visit the Geography Website](#)

Jody Emel.....Acting Director  
Robert (Gil) Pontius.....Associate Director  
Christine Creelman.....Department Administrator  
Brenda Nikas-Hayes.....Graduate Program Administrator  
Rachel Levitt.....Undergraduate Program Coordinator  
Kayla Peterson.....Office Coordinator  
Jane Salerno.....Director, Media Relations

Newsletter Editor: Rachel Levitt

Cover Photo: Sam Berman; Luca  
(Barga), Italy

All photographs used in this  
publication were contributed by Clark  
Geography faculty, students, and/or  
staff unless otherwise noted.



## PAGE 3

### Director's Welcome

- A note from Jody Emel

## PAGE 4

### Faculty News

- Updates and the Latest Info from GSG Faculty Members
- Professor Rinku Roy Chowdhury

## PAGE 5

### Graduate Student News

- Updates from Doctoral Students
- Wildlife Conservation Seminar

## PAGE 7

### Undergraduate Student News

- Updates and Awards Given
- Summer 2015 HERO Program

## PAGE 9

### Alumni News

- Updates from our Clark community beyond campus

## PAGE 10

### Study Abroad Spotlight

- Hannah Rosenblum shares her experience studying in Jordan

## PAGE 11

### Student Travel

- Doctoral students share their summer research plans

## PAGE 12

### Atwood 2015

- A recap of this year's Atwood

## PAGE 13

### Practicing Geography Week

- A recap of this year's lineup of events for our 4th annual Peter J. Condakes Practicing Geography Week
- New York City undergraduate field trip

## PAGE 16

### AAG 2015

- Photos from this year's conference in Chicago, Illinois

## PAGE 17

### Commencement

- Graduates from the Class of 2015

## PAGE 18

### Careers in Geography

- Networking tips and job-searching advice from Rachel Shmookler (BA '09, MA '10 alum)
- Resources & recommendations

## PAGE 21

### Updates & Events

- Fall 2015 Colloquium Schedule
- **HELP WANTED:** Work-Study Positions Available for the 2015-16 Academic Year

## PAGE 22

### CUGA Corner

- About CUGA & E-Board
- Photos from CUGA's recent trip to Cascading Waters, Worcester

# WELCOME

Greetings from Acting  
Director Jody Emel



Summer in New England! What could be better? We survived the incredible winter of 2015 with only a few falls and accidents, although Boston (and Worcester) suffered economically and otherwise. The T was shut down completely for a couple of days – first time ever to my knowledge. Worcester received over 119 inches of snow and Eastport, Maine received 132 in only 5 weeks! Newscasters were joking about running the Iditarod in Boston as Anchorage had relatively little snow. The winter was most likely the first real climate change related “disaster” for this part of the country. To their credit, a number of Clark Geography faculty took part in an all-day climate change teach-in, beginning with a plenary lecture by [Chris Williams](#) and followed by [Susi Moser](#), alumna of Clark Geography Ph.D., '97. [Dianne Rocheleau](#) was one of the three primary organizers of the all-day event and [Tony Bebbington](#), [Ron Eastman](#), [Florescia Sangermano](#), and myself offered sessions. Several graduate students were also involved. As Naomi Klein wrote, “this changes everything” and we are planning to incorporate much more education about climate change, resistance and adaptation into the classroom, the departmental events, and university functions.

On a positive note, Clark Geography was very honored at this year's AAG meeting in Chicago. [Bobby Wilson](#) (Clark Ph.D., 1974) received AAG Lifetime Achievement Honors and the AAG Harold M. Rose Award for Anti-Racism Research and Practice; [Susan Hanson](#) received the Stanley Brunn Award for Creativity in Geography; [Cindi Katz](#) (all three degrees from Clark Geography: 1975, 1979, 1986 Ph.D.) received an award for lifetime contributions to radical geography; [Tony Bebbington](#) (Clark Ph.D., 1990 and current Director) received AAG Distinguished Scholarship Honors; [Kelly Kay](#) (current Ph.D. student) received the 2015 Award for Best Student Paper from the Economic Geography Specialty Group of the AAG; and [Connie Johnston](#) (Ph.D. Clark 2013) was a finalist for the Nystrom Award for Best Dissertation. The awards were given out by current AAG President [Mona Domosh](#) (also all three degrees from Clark Geography and a Clark Trustee).

This coming fall we are very fortunate to welcome [Rinku Roy Chowdhury](#) to our faculty. Rinku is a political ecologist-land change scientist who was formerly at Indiana University. We are thrilled she will be joining us. [Prajwal Panday](#) will also join us in a visiting position while Karen Frey, Dominik Kulakowski, and Chris Williams are on sabbatical.

Have a great summer! [Jody Emel](#), Acting Director

## REMINDERS

### » GEOGJOBS «

Looking for a work-study job for the 2015-16 academic year? Apply to work in the Geography Main Office as an [Office Assistant](#) or a [GIS Support Assistant](#) today! Students majoring in Geography, Global Environmental Studies, and Earth System Science are encouraged to apply.

See [page 21](#) for more information, and contact [Rachel Levitt](#) (Undergraduate Program Coordinator) to apply at [RLevitt@clarku.edu](mailto:RLevitt@clarku.edu).

### » ATWOOD «

Save the date! The 2015-2016 Atwood Lecture will take place in the Fall this year on [Thursday, October 15th](#) in Tilton Hall, featuring [Dr. Eric Lambin](#), George and Setsuko Ishiyama Provostial Professor and Senior Fellow at the Woods Institute for the Environment in Stanford University's School of Earth, Energy & Environmental Sciences! Questions about Atwood can be directed to our Office Coordinator, [Kayla Peterson](#) at [KaPeterson@clarku.edu](mailto:KaPeterson@clarku.edu).

### » COLLOQUIUM «

Mark your calendars for the Fall 2015 Colloquium Speaker Series Lineup, fully outlined on [page 21](#)!

**\*\*All Colloquium talks will be held on Thursdays in Jefferson 218 from 12:00-1:15 pm with a reception to follow in the Geography Commons (Jefferson 220C), unless otherwise noted.\*\***

If you have any questions regarding the Colloquium Speaker Series, please contact [Kayla Peterson](#).



# FACULTY NEWS

**Associate Professor Chris Williams** recently authored the article "Heat and drought extremes likely to stress ecosystem productivity equally or more in a warmer, CO2 rich future." [Click here for the article.](#)

**Associate Professor John Rogan** was recently mentioned in the *Telegram & Gazette* article, "Real-world research." [Click here for the article.](#)

**Associate Professor Jim Murphy** co-wrote an article for *Geographical Magazine* entitled, "[Africa's information revolution: rhetoric and reality.](#)"

**Professor James McCarthy** was recently quoted in the article, "[Ted Cruz aims to win the West.](#)"

**Associate Professor Chris Williams** was recently quoted in the *Telegram & Gazette* article, "[Climate change teachers at Clark: Gird for the long haul.](#)"

**Associate Professor Chris Williams** tells *The Christian Science Monitor* that California needs to seriously consider quick action to impose mandatory water-use restrictions across all sectors to ration remaining water resources as well as to closely monitor and regulate groundwater withdrawals. The need is critical, he

says: "There is no relief in sight." [Click here for the article.](#)

**Assistant Professor Mark Davidson** was recently quoted and featured in the WPRI news story, "Boston Olympics would benefit RI; Newport venues not likely." [Click here for the article and video interview.](#)

## WELCOME, RINKU!

**Professor Rinku Roy Chowdhury** has officially joined the GSG team and will be starting to teach courses in the upcoming Fall semester!



Rinku joins us from Indiana University Bloomington, where she was an Associate Professor in the Department of Geography and co-director of the Anthropological Center for Training and Research on Global Environmental Change (ACT). Prior to Indiana, she was an Assistant Professor in the University of Miami's Department of Geography and Regional Studies, where she played an active role in the Abess Center for Ecosystem Science and Policy.

Rinku's educational journey has included a bachelor's degree in Computer Science and Environmental Science (Wellesley College), a masters in Conservation Ecology and Sustainable Development (University of Georgia), and a Ph.D. in Geography (Clark University). Her research focuses on institutional, ecological and spatial diversity of human-environment interactions in forest-agricultural mosaics (Mexico), urbanizing ecosystems (multiple sites in the US), and coastal mangrove vulnerability to anthropogenic and climate change (Americas, S Asia). She is particularly interested in linking theoretical, methodological and field-based approaches from the social and ecological sciences to understand smallholder land and agribiodiversity management, how institutional structures and local agency interact to shape landscapes, and the evolution of adaptive strategies in the face of climate and political-economic change. She is active in the US Long-Term Ecological Research (LTER) network (primarily affiliated with the Florida-Coastal Everglades and Baltimore Ecosystem Study sites) and as a member of the Global Land Project's scientific steering committee.

Thanks to Rinku for providing this information — we are excited to have her join us in the Fall!





# GRADUATE STUDENT NEWS

## DOCTORAL NEWS

**Kristen Shake** has been selected as one of only 2 Americans to win a fellowship to join a post-graduate [summer school](#) at Aalborg University in Denmark in the "Change and Continuation in the Arctic" program, which is co-sponsored by CIRCLA, UArctic, and ARC.

**Elisa Arond** received an Inter-American Foundation Grassroots Fellowship for 2015 for dissertation research and field work for her project titled, "Beyond the Resource Curse? Prospects for Inclusive Regional Development through Science, Technology and Innovation in Colombia."

**Alida Cantor** received a Sussman 2015 Summer Research Award.

**Juan Luis Dammert** had a book review accepted by the journal *Americas Quarterly* for his review of the book "Resource Extraction and Protest in Peru" written by Moises Acre. The review is in the winter 2015 issue and comes with a monetary award.

**Juan Luis Dammert** received an Inter-American Foundation Grassroots Fellowship for 2015 for his dissertation proposal, "Grassroots and coalitions: the politics of oil palm expansion in the Peruvian Amazon."

**Arthur Elmes** received a Sussman 2015 Summer Research Award and an additional Merit Award beyond his budget request.

**Nathan Gill** received a Sussman 2015 Summer Research Award.

**Nathan Gill** received a NSF GRFP 3-year funding for his dissertation proposal "Drivers and consequences of regeneration following beetle outbreak under climate change." Funding begins Sept 2015

**Catherine Jampel** received a Valente-National Endowment for the Humanities Fellow 2015-2016

**Adrienne Johnson** has been awarded a 2015-2017 postdoctoral fellowship by the Social Science and Humanities Research Council (SSHRC) of Canada. She will hold the award at the Faculty of Environmental Studies, York University.

**Connie Johnston** is a finalist for the J. Warren Nystrom award for 2015 (presentation by finalists at the Chicago AAGs). A fund established by former AAG Executive Director J. Warren Nystrom supports an annual prize for a paper based upon a recent dissertation in geography.

**Kelly Kay** received an NSF DDRI in December 2014 for her dissertation

research entitled, "In Trusts We Trust: Land Trusts, Conservation Easements, and the Growth of Private Land Protection in the United States." Funding will be for the coming year.

**Kelly Kay** received a Best Student Paper award for the Economic Geography Specialty Group at AAG Chicago. Paper title, "A Hostile Takeover of Nature? Placing Value in Conservation Finance."

**Chris Knudson** received an SSHRC fellowship for calendar year 2014 for his dissertation research.

**Padini Nirmal** received an NSF DDRI in December 2014 for her research entitled, "Indigenous Ontologies of Land and Land Politics in India: A Critical Analysis of the 'Forest Rights Act' for Policy Effectiveness in Attappady, Kerala." Funding will be for the coming year.

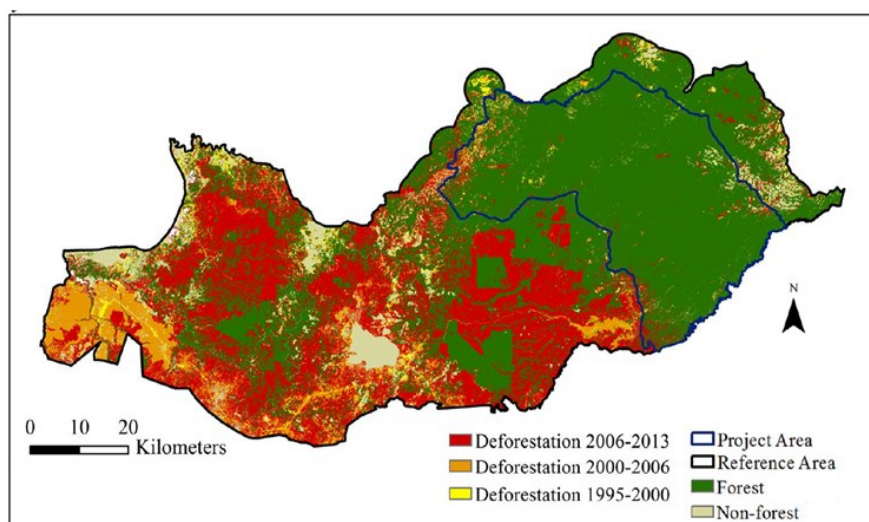
**Kevin Surprise** received an NSF DDRI in December 2014 for his dissertation research entitled: "To govern the earth: the making of geoengineering policy in the United States, and the changing meaning of the 'geo' in geopolitics." Funding will be for 2015.

Be sure to watch our website for the latest student updates: [clarku.edu/departments/geography/graduate/student-news/](http://clarku.edu/departments/geography/graduate/student-news/)

# GRADUATE STUDENT NEWS

## WILDLIFE CONSERVATION SEMINAR

This past semester, students in **Professor John Rogan** and **Professor Florencia Sangermano's** GEOG 336 Wildlife Conservation GIS Research Seminar, students worked in small groups on collaborative conservation projects focusing in Cameroon, Guatemala, Cambodia, and Madagascar. Students applied GIS and remote sensing skills to achieve explicit conservation goals related to land cover mapping, land change assessment and deforestation predictions. Work was performed in close collaboration with Wildlife Conservation Society research staff, and projects were presented to these staff members at the end of the semester.



**Figure 4.** Cumulative deforestation within the REDD+ Seima Protection Forest project area from 1995 to 2013.

This above map was made using a time series of Landsat imagery and a software program called CLASlite, that was developed by the Carnegie Institution for Science at Stanford University . (<http://claslite.carnegiescience.edu/en/>)

time at relatively low cost. The results are being compared with local expert knowledge and with past analyses by WCS using more laborious manual change detection methods in the same areas. This will inform WCS decisions about whether CLASlite is reliable enough to apply more widely in the future, and in those sites where the results appear robust, they will help site managers to better understand the pattern and intensity of threats – with particular applications to REDD+ projects that are underway or being considered in all four sites.”

(From L to R, standing) Professor Florencia Sangermano, Mandy Gaudreau (PhD Biology), Alison Thieme (MS GISDE), Bernadette Arakwiye (PhD Geography), Heather Cormier (MS GISDE), Molly Cox (MS GISDE), and Marissa Gallant (MS ES&P). (From L to R, kneeling) Sarah Stanley (MS ES&P), and Bridget Naphen (MS ES&P). (Not pictured – Sean McCartney MS GISDE and Professor John Rogan)

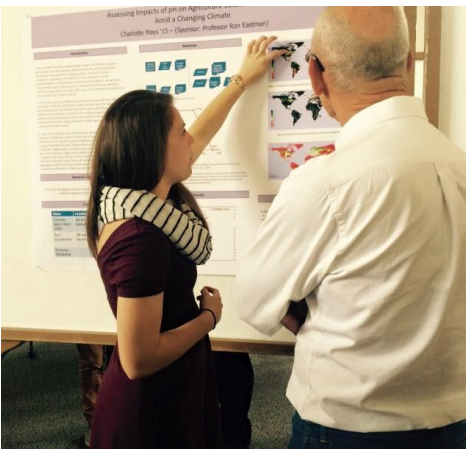




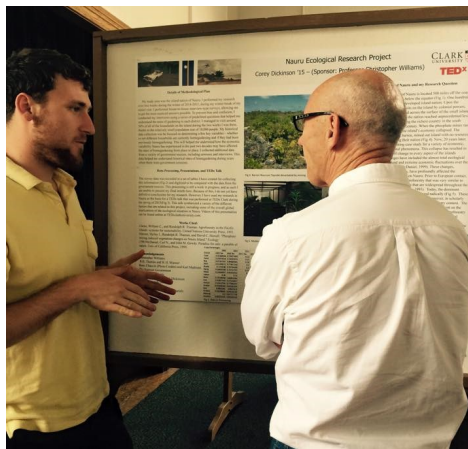
# UNDERGRADUATE NEWS

## ACADEMIC SPREE DAY

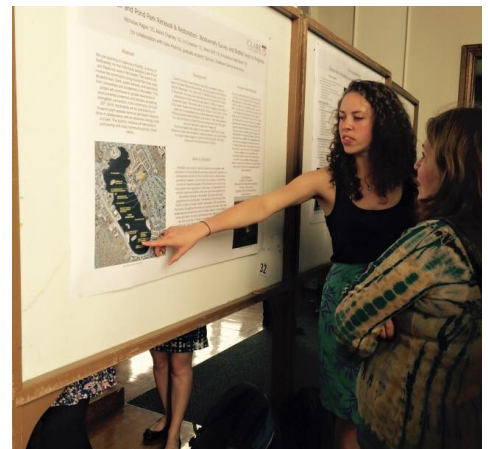
On **April 22nd**, undergraduate students gathered in Tilton Hall and the Academic Commons of the library to present various research projects they have been working on during the past year:



**Charlotte Mays** (GEOG, '15) shares her research on "Assessing Impacts of pH on Agriculture Suitability Analysis Amid a Changing Climate".



**Corey Dickinson** (GEOG, '15) shares his research on "Agroforestry Systems in the pacific island state of Nauru".



**Elizabeth Crowther** (GES, '15) explains team research done on "Coes Reservoir and Pond Park Renewal and Restoration: Biodiversity Survey and BioBlitz work in Progress"

Check out the full Academic Spree Day Program and see more great posters and projects being displayed:

[clarku.edu/research\\_asd\\_ff.cfm](http://clarku.edu/research_asd_ff.cfm)

## UNDERGRADUATE AWARDS

Congratulations to all of our 2014-15 undergraduate award recipients:

**Yuka Fuchino** (GEOG, '16) was named the 2015 Peter J. Condakes Summer Research Fellow.

**Michino Hisabayashi** (GEOG, '15) received the Ellen Churchill Semple Award.

**Rebecca Chapman** (GEOG, '15) received the IDRISI Excellence in Geographic Information Science Award.

**Joey Hersh** (GEOG, '15) received the NCGE Excellence in Scholarship Award.

**Selena Shabot** (GES, '15), **Rebecca Liebman** (GES '15), and **Rebecca Miller** (GES, '15) co-received the Linda Roth Memorial Activist Scholar Award.

**Julia Groenfeldt** (GES, '15) received The Marcia V. Szugda-Emani Memorial Environmental Scholarship Award.

**Gabrielle Kent** (GES, '15) received the Global Environmental Studies Outstanding Student Award.

**Eric Pasay** (ESS, '16) received the Strabo Award.



# UNDERGRADUATE NEWS

## H•E•R•O

HUMAN ENVIRONMENT REGIONAL OBSERVATORY



Human-Environment  
Regional Observatory

On **Monday, June 8th**, we kicked off the summer of our 2015 HERO program by welcoming this year's group of fellows! The morning began with a presentation led by **Professor John Rogan**, explaining what HERO is all about, and the opportunities that this year's class will have as part of the program. The program is coordinated by **Professor Rogan** and **Professor Deb Martin**, along with **Verna DeLauer** (Research Scientist at the [Marsh Institute](#)), with the assistance of Graduate Program Administrator **Brenda Nikas-Hayes**. This year, we have 6 new undergraduate HERO fellows, all Clarkies. This small, yet effective group of students has already begun performing field work and will be working vigorously to complete their research by late July, when they will present research findings to officials from the Department of Conservation and Recreation, and The Worcester Tree Initiative.

Congratulations to our 2015 HERO Fellows:

- **Ali Filipovic** (GEOG, '17)
- **Yuka Fuchino** (GEOG, '16)
- **Eli Goldman** (GEOG, '16)
- **Isabel Miranda** (GEOG, '17)
- **Bao Chung Truong Nguyen** (GEOG, '16)
- **Hannah Rosenblum** (GEOG, '16)

## 2015 HERO MANAGERS



**Michelle Andrews**  
5th Year MS-GIS Student  
B.A. Geography  
Clark University



**Arthur Elmes**  
GSG Doctoral Student  
M.A. Geography, West  
Virginia University  
B.A. Geography, West  
Virginia University



(Top Row, L to R): **Isabel Miranda**, **Eli Goldman**, **Bao Chung Truong Nguyen**. (Bottom Row, L to R): **Ali Filipovic**, **Hannah Rosenblum**, and **Yuka Fuchino**.



# ALUMNI NEWS

## DOCTORAL ALUMNI

**Andrew Schiller**, Ph.D. '01 was recently featured in GoLocalWorcester.com for his expanding business Location, Inc. with the addition of three new employees and the relocation of his company to the Shrewsbury Street business district. Location, Inc, involves big data analysis, assisting people in finding the best place to live when relocating their families. Andrew started Location, Inc. while at Clark University.

**Cindi Katz**, Ph.D. '86 received the James Blaut Memorial Award at the 2015 Association of American Geographers Annual Meeting in Chicago for scholarship, mentorship, and activism and delivered the Blaut Memorial Lecture.

**Anthony Bebbington**, Ph.D. '90 and Director of the GSG, was awarded the 2015 AAG Distinguished Scholarship Honors for his "exceptional record of scholarly achievement and policy relevance in the fields of development studies, natural resource management, and sustainable livelihoods."

**Connie L. Johnston** '13 was a finalist for the J. Warren Nystrom Best

Paper award for 2015 (presentation by finalists at the Chicago AAGs), a fund established by former AAG Executive Director J. Warren Nystrom which supports an annual prize for a paper based upon a recent dissertation in geography.

**Ann Oberhauser**, Ph.D. '88, Professor of Geography at West Virginia University, has been recognized by OECD, the Organization for Economic Co-operation and Development Social Institutions and Gender Index for her work on women's rights and gender issues on the global stage. Dr. Oberhauser is co-editor of *Global Perspectives on Gender and Space: Engaging Feminism and Development*, a book exploring the link between gender and global development.

**Michele Masucci**, Ph.D. '87 has been named Vice Provost of Research at Temple University.

**Hong Jiang**, '97 has been named Director, Department of Geography, University of Hawaii, Manoa

**Menzie McEachern**, '05 was named Director of Petroleum Resources, Government of Northwest Territories, Canada

## CAREERS OF RECENT ALUM

*(Posts taken by graduates, ABDs or alums in 2015, Geography appointment if not otherwise stated)*

**Susan Aragon-Carrasco** — CAPES Research Fellow at Universidade do Oeste de Pará (UFOPA), Santarém, Brazil

**John Lauermann** — One-Year Lecturer at University of Mary Washington University, VA.

## ALUMNI LIST-SERV

This list is simply to keep you connected to faculty, students and staff of the GSG and can hopefully provide a way for you to network in years to come. No solicitations will be distributed. Information will typically consist of the following:

- Geography newsletters
- GSG events on campus
- Upcoming talks
- GSG reunions
- Annual AAG Clark Alumni Party

If you would like to be added to the alumni list-serv, please contact **Brenda Nikas-Hayes** (Graduate Program Administrator) with your non-Clark email address to request to be added.



حي الشميساني

AL-IDREESI ST.

# STUDY ABROAD SPOTLIGHT

**HANNAH ROSENBLUM**

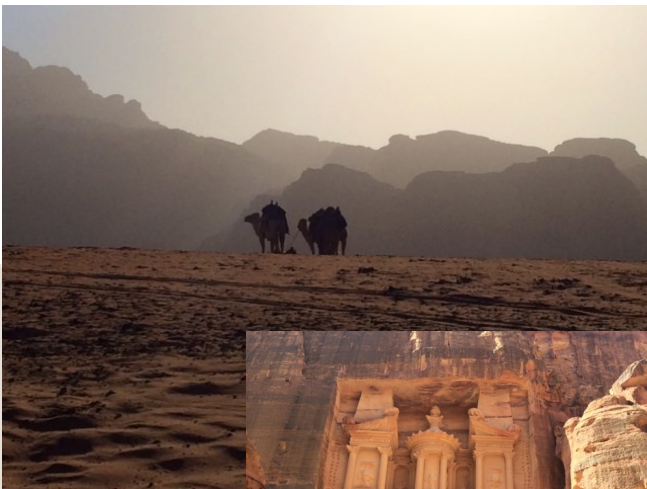
**IN JORDAN, SPRING '15**



Hannah Rosenblum, one of our CUGA co-presidents, sends us updates from her adventures abroad in Jordan!

"We finally went to Wadi Rum and Petra - the trip was delayed twice because of a dust storm one weekend and a snowstorm the next. Wadi Rum is so much more beautiful than any photo can capture, the colors of the sand and it's vastness are breathtaking. We stayed in a Bedouin camp and went on camel and truck bed rides, which were so much fun. The drive to Petra was mostly gorgeous desert views and as we approach, Aaron's tomb was visible, as it is painted white and is atop the highest peak in the area. At Petra, it's a short hike to the ancient city and it goes through a naturally formed canyon, which the Nabateans carved an aqueduct into, as well as a sculpture of human and camel's feet to serve as a marker for passing caravans. The city was immense, divided into the tomb side and the 'living side' by a large amphitheater. My friends and I hiked the 800 steps to the

Monastery, which is even larger than the Treasury, and witnessed a local climb to the very top. The entire weekend was such a beautiful and fun experience and I'm so grateful to have had this opportunity!"



Above: Katherine Landesman (left), GES '16, and Hannah Rosenblum, GEOG '16, riding camels through Wadi Rum, Jordan





# STUDENT TRAVEL

See where some of our students are heading off to for the upcoming months!

## JUAN LUIS DAMMART DOCTORAL STUDENT

---

**Juan Luis Dammert** will spend the 2015-16 academic year in Peru, carrying out fieldwork on the expansion of oil palm plantations in the Peruvian Amazon, supported by the Inter-American Foundation's Grassroots Development Fellowship Program

---

## DOCTORAL STUDENT LAURA SAULS

**Laura Sauls** will be in San Salvador, El Salvador, for about six weeks working with PRISMA — the Salvadoran Research Program on Development and Environment — on Central American climate and forest policy. Laura will then head to Utrecht, the Netherlands, to participate in the LANDac International Conference on Land Governance for Equitable and Sustainable Development, where she will present a paper co-authored by **Denise Humphreys Bebbington** on forest-based social movements in Central America.

## NATHAN GILL DOCTORAL STUDENT

---

**Nathan Gill** will be spending four weeks out in northern Colorado leading a group of students from **Dominik Kulakowski's** Forest Ecology Research Lab. The group will be conducting research in Routt National Forest to study post-disturbance regeneration. They will be setting up climate stations in areas that have recently experienced various combinations of wind storm damage, wildfire, and bark beetle outbreak, and will be taking measurements of the regeneration that is occurring at those sites.

---

## DOCTORAL STUDENT PHEAKKDEY NGUON

**Pheakkdey Nguon** will be in Cambodia, as lead author, this summer to finalize the Cambodia National REDD+ Strategy, which will be endorsed by the Ministry of Agriculture, Forestry and Fisheries and Ministry of Environment, and subsequently by the Prime Minister. His participation in this process is sponsored by The World Bank's FCPF via UNDP Cambodia.

## KRISTEN SHAKE DOCTORAL STUDENT

---

**Kristen Shake**, along with **Sam Berman** (5th Year MS-GIS student), will be going once again on the Distributed Biological Observatory (DBO) cruise on board the CCGS Sir Wilfrid Laurier from July 11-24th. The route will be from Dutch Harbor, Alaska to Barrow, Alaska. They will be taking a variety of oceanographic data, including measuring light levels, chlorophyll, and suspended particulate material (SPM) in long term research sites in the Northern Bering, Northern Chukchi and Beaufort Seas as part of an effort to understand Pacific-Arctic marine ecosystem response to sea ice loss in those regions.

# ATWOOD 2015

## RUTH WILSON GILMORE

On **Thursday, March 19th**, we welcomed **Dr. Ruth Wilson Gilmore** to our campus as our Spring 2015 Wallace W. Atwood guest lecturer! **Dr. Gilmore** works tirelessly in her roles as the Director of The Center for Place, Culture, and Politics at CUNY, Professor of Earth & Environmental Sciences, and American Studies, and Executive Committee member of the Institute for Research on the African Diaspora in the Americas and The Caribbean (IRADAC). Dr. Gilmore can be defined as a social and political geographer with an emphasis on critical race stud-

ies, although her research encompasses much more. She was awarded the 2012 ASA Angela Davis Award for Public Scholarship, and the 2014 AAG Harold M. Rose Award for Anti-Racism Research and Practice.

During the evening of **March 19th**, **Dr. Gilmore** gave a thoughtful, provocative and inspiring lecture entitled "*Too Soon for Sorry: Abolition Geography and the Problem of Innocence*." Her talk revolved around her research and findings on the California prison system, and the foundations of racial inequalities in the United States of America. The lecture was followed by a lively Q&A session and a reception with food, drink, and fabulous music provided by Clark's own jazz ensemble, "David's Angels" (**Andy Winslow, Matt Thompson, Mickayla Aboujaude, Alex Monaco, Grant Henry, and Danny Neuman**).

The next morning, on **Friday, March 20th**, **Dr. Gilmore** continued to share her knowledge with faculty and students during a morning seminar. This was an excellent opportunity for faculty and students to engage with Ruth in a smaller setting, and to discuss her research on a deeper level. This year's Atwood was a happy success, and we thank **Dr. Ruth Wilson Gilmore** for taking the time to visit us!

### The Graduate School of Geography

invites you to attend the

**2015 Wallace W. Atwood Lecture**  
**March 19th 7:00PM- Tilton Hall**



## Ruth Wilson Gilmore

presenting

### *Too Soon for Sorry: Abolition Geography and the Problem of Innocence*

**Director**—The Center for Place, Culture, and Politics

**Professor**—Earth & Environmental Sciences, and American Studies- CUNY

**Executive Committee**— Institute for Research on the African Diaspora  
in the Americas and The Caribbean (IRADAC)

For more information, contact the Geography Dept. at 508-793-7434



A special thanks to **Kayla Peterson** (Office Coordinator) for writing this feature.



# PRACTICING GEOGRAPHY WEEK

For the week of **March 30th-April 5th**, the School of Geography enjoyed it's 4th Annual Peter J. Condakes Practicing Geography Week, a week full of career-focused events for undergraduate students interested in Geography, Global Environmental Studies and Earth System Science. Consisting of 5 events and a weekend-long field trip to New York City, new connections and friendships were made and the GSG grew a little closer. Check out some of the events that took place, and keep an eye out for announcements about next year's week of fun!

## GEOGRAPHY SPRING KICK-OFF

MONDAY, MARCH 30TH | "BUNNY INFERNO"



Practicing Geography week began with a new event held at the Goddard Grove called the spring kick-off ("bunny inferno"). Students gathered for coffee and tea, while assembling their own marshmallow peep & chocolate bunny s'mores to celebrate spring, even though it was still only 50 degrees outside! Students competed in "Chubby Bunny" and enjoyed a nice break from studying for finals.



(Bottom left) **Kristen Shake** (Ph.D. Student) sneaks ahead of the competition and wins round 1 of "Chubby Bunny", and (Bottom right) **Alex Hayes** (GEOG, '16) shows off his prize for winning round 2!

## CUGA TRIVIA NIGHT

TUESDAY, MARCH 31ST | "WHERE IN THE WORLD IS CARMEN SANDIEGO?"

On **March 31st**, CUGA Co-Presidents **Will Heikes** (GEOG, '17) & **Amy Phillips** (GEOG/GES '16) ran the "Where in the World is Carmen Sandiego?" Geography Trivia Night. Students shared snacks and played to win versions of the Carmen Sandiego board game while testing their knowledge of geographical trivia. To learn more about CUGA, check out the CUGA Corner on [page 22](#), or email [clarkcuga@gmail.com](mailto:clarkcuga@gmail.com) to join for the Fall 2015 semester!



# PRACTICING GEOGRAPHY WEEK

## DEPARTMENTAL AWARDS & GTU INDUCTION

WEDNESDAY, APRIL 1ST

On **Wednesday, April 1st** the GSG presented 9 students with departmental awards for various achievements, as well as inducted 18 new members into [Gamma Theta Upsilon](#) (GTU), the International Geographic Honors Society. **Professor Mark Davidson** led the ceremony as Chair of the Undergraduate Studies Committee, as students were recognized in front of faculty, family and friends for their hard work and accomplishments throughout their years at Clark. For a full list of the awardees, award qualifications, and GTU inductees, [visit our website](#) and [Geography Facebook page!](#) (photo: **Julia Groenfeldt** GEOG '15 and **Dr. Sri Emani**, Ph.D. '01)



## STUDENT RESEARCH SYMPOSIUM

THURSDAY, APRIL 2ND | RESEARCH IN GEOGRAPHY

On **Thursday, April 2nd**, we added a new event to Practicing Geography Week, the Student Research Symposium. As a brainchild of our 2 CUGS representatives **Kristen Shake** and **Dexter Locke** (Ph.D. Students), a blend of students from various programs prepared brief presentations about their current research. Thanks again to **Alex Sphar** (Ph.D. Student), **Amy Phillips** (GEOG/GES '16), **Nelson Crone** (GISDE), **Ali Farahini** (Ph.D. Student) and **Michelle Andrews** (MS-GIS 5th year student) for taking the time to share their research with all who attended!

## PRACTICING GEOGRAPHY TALK

THURSDAY, APRIL 2ND | EMILY SHUSAS



Also taking place on **Thursday, April 2nd**, was our guest lecture from alumna **Emily Shusas** (BA '02, MA '03) focusing on "Using GIS for Environmental Health and Energy Applications". Emily is a project manager with the New York State Energy Research & Development Authority and previously worked as a research scientist with the New York State Department of Health. In her current position, geographic analysis is used for activities such as capturing load zone and utility territory-specific impacts of energy efficiency programs and ensuring geographic equity in the distribution of program funding and benefits. Thank you, Emily, for coming to share your experiences with us!

(Practicing Geography Week continued on next page)



# PRACTICING GEOGRAPHY WEEK

## NEW YORK CITY FIELD TRIP

FRIDAY APRIL 3RD — SUNDAY APRIL 5TH



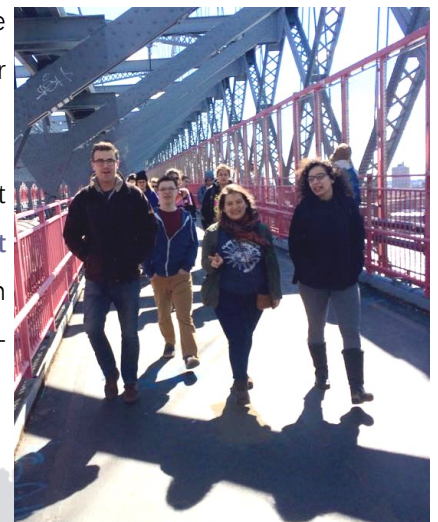
Professor Davidson sharing the itinerary with the group before the first walking tour



Renee Tapp (Doctoral Student) talking about gentrification on Friday's walking tour

Over the weekend of [April 3rd-5th](#), 17 undergraduate students attended our second annual Practicing Geography field trip to New York City for some exploring. [Professor Mark Davidson](#) led the group in several walking tours over the weekend, along with two doctoral students [Renee Tapp](#) and [Fernando Hernandez Espino](#), who contributed to the urban geography experience. The itinerary included a Friday group dinner at Baci & Abbracci, a small, family-owned Italian restaurant in Williamsburg, Brooklyn to kick off the trip, following a walking tour through Williamsburg, Fort Greene, and the Atlantic Yards upon arrival. The students had free time after dinner to explore the neighborhood and met up the next morning outside of the B-Hotel and Hostel (Williamsburg) for Saturday's expedition, which included walking tours all the way from the Williamsburg Bridge, to Harlem, the Upper West Side, Central Park and Times Square. The trip came to a close on Sunday with another walking tour in the morning focusing on Manhattan skyscrapers, after which we all headed back to Clark. After a fun weekend and a long trip home, new friendships were made, and everyone seemed to feel a little bit more integrated into the Clark Geography family. Thanks again to everyone who attended, and to Professor Davidson for leading the pack!

If you're interested in attending next year's NYC trip, contact [Rachel Levitt](#) ([RLevitt@clarku.edu](mailto:RLevitt@clarku.edu)) for information on when those details will be announced.





# AAG 2015

## AAG CONFERENCE, CHICAGO IL

APRIL 21-25, 2015

This spring, many of our faculty, graduate and undergraduate students attended the AAG (Association of American Geographers) Annual Meeting in Chicago, Illinois from **April 21st — 25th**. In addition to attending multiple forums, meetings, presentations and poster sessions, many of our geographers presented material of their own.



Clarkies at the Bean! (L to R) Erin Glennie, Alex Hayes, Amy Phillips, Ben Ewald and Hannah Rush



(L to R) Alison Thieme, Kayla Patel, Matt Gibb and Arthur Elmes

## JOIN US: AAG 2016

### [Submitting Papers](#) | [Important dates](#)

- July 31, 2015: registration and abstract submissions open
- Oct 29, 2015 (5 p.m. EDT): abstract submission deadline
- Nov 18, 2015 (5 p.m. EST): Session organization deadline
- Dec 4-8, 2015: all editing temporarily suspended
- Feb 18, 2016: Deadline for submitting poster abstracts
- Feb 18, 2016: abstract and session editing deadline
- March 29 - April 2, 2016: AAG 2016 San Francisco Annual Meeting



Photos taken from Clarkies who uploaded to the AAG Mobile App during the conference. [Click here to view more photos](#)





# COMMENCEMENT

## CONGRATULATIONS, CLASS OF 2015!

MAY 17TH, 2015

### GRADUATING SENIORS

#### Geography:

Ryan Barney  
Holden Beale  
Suzanne Birdsell  
Samuel Brivic  
Rebecca Chapman  
Peter Cunningham  
Corey Dickinson  
Benjamin Ewald  
Erin Glennie  
Joseph Hersh  
Michino Hisabayashi  
Marina Khananayev  
Alexandra Knopf  
Charlotte Mays  
Benjamin Mintz  
Dennis O'Brien  
Hannah Rush  
Rena Schuman Stoler  
Melat Seyoum  
Justin Sharkey  
Katlyn Smith  
Hannah Sonderby  
Matthew Yalouris

#### Global Environmental Studies:

Kori Bloom  
Kerry Burke  
Samantha Caputo  
Elizabeth Crowther  
Julia Groenfeldt  
Corinne Jachelski

Zachary Jones  
Gabrielle Kent  
Rebecca Liebman  
Rebecca Miller  
Mikaela Monous  
Samantha Sandella  
Selena Shabot  
Emily Smela  
Daryle Ward-Cherry  
**Earth System Science:**  
Ethan Forauer  
Annalise Kukor  
Nathaniel Lapidès

### DEPT. HONORS

**Highest Honors:**  
Michino Hisabayashi  
Joseph Hersh  
**High Honors:**  
Rebecca Chapman  
Erin Glennie  
Alexandra Knopf  
Charlotte Mays  
Hannah Rush  
**Honors:**  
Suzanne Birdsell

### GAMMA THETA UPSILON [ GTU ] GRADUATES

Suzanne Birdsell  
Samantha Caputo  
Ethan Forauer

Julia Groenfeldt  
Joseph Hersh  
Michino Hisabayashi  
Corinne Jachelski  
Alexandra Knopf  
Annalise Kukor  
Charlotte Mays  
Mikaela Monous  
Rebecca Miller  
Daryle Ward-Cherry

### MS-GIS 5TH YEAR GRADUATES

Joseph Danko (Aug '14)  
Lucas Earl  
Alexander Kappel (Dec '14)  
Matthew Manley (Aug '14)  
Emily Sturdivant

### GISDE GRADUATES

Faleh Mohammed Aldham  
Heather Cormier  
Mary Cox  
Matthew Gibb  
Yibing Han  
Jiabin Heng  
Jiayue Li  
Dansheng Liang  
Timothy Liponis  
Sean McCartney  
Timothy St. Onge

Ting Wu  
Xiao Xiao  
Holly Zanoni  
Ouya Zhang  
Shu Zhang  
Zikang Zhou

### PH.D. GRADUATES

John Lauermann (Dec '14)  
Oona Morrow (Dec '14)  
Kangping Si (Dec '14)  
James Thatcher (Dec '14)  
Luke Trusel (Dec '14)  
Melanie Vanderhoof (Aug '14)

[Click here](#) to view the GSG commencement reception slideshow!



Congrats to Brenda Nikas-Hayes (Graduate Program Administrator) for receiving her B.S. in Communications through COPACE! Above, Brenda and Kangping Si, Ph.D. graduate (Dec. 2014).

# CAREERS IN GEOGRAPHY

## RACHEL SHMOOKLER

BA '09, MA '10 | GIS ANALYST — RPS ASA

Rachel Shmookler, MA-GIS & Clark B.A. alum, shares her insight and advice to students heading out into the working world!

“ Clark Geography graduates are everywhere and Clark alumni in general have a closer bond than your average college alum and they may be well suited to pass on a resume to a hiring manager. Cultivate existing relationships from Clark as you progress into your professional career. ”



## FUN FACT

“Most important skills learned from Clark: How to think and write like a scientist. And time management.

## GEOGRAPHY KNOWLEDGE BASES

Within the geography world there are two general types of skillsets: **GIS-based technical skills and scientific/planner skills**. Professionals with technical skills typically fill either a technician role for tasks such as general data management and development, or they provide IT based solutions for desktop or web GIS systems.

Technicians provide critical support for projects at many different levels. They are highly acquainted with specific data details and fill key roles such as field data collection, though in some cases these positions may be less suited to job growth potential than other positions. Technical professionals engaged in GIS based IT solutions are typically in a more managerial position that oversees integration of data into public and private desktop or web systems. These positions carry more responsibility and a higher salary than technician positions and require greater background in computer programming and web servers. Individuals in technical positions provide services and solutions for a broad range of industries, including environment, health, law enforcement, marketing, government, and economics.”

In contrast, scientists and planners have a specific area of expertise and are responsible for designing projects or research questions that address specific issues, i.e. how can populations below the poverty level obtain better access to fresh, local food, or how can scientists mitigate coral reef die off?...”

(continued on next page)





# CAREERS IN GEOGRAPHY

(continued from [page 18](#))

“...Scientists and planners ultimately manage the project and answer to their targeted audience (e.g. government, academia, the public), and they leverage technical staff to help answer these questions via data development, analysis, management, and distribution. This is not a universal rule, but scientists and planners tend to have the project vision and technical staff help them provide some of the solutions.

For generalists that want to use both technical and scientific skills, there are certainly positions and careers available. However there is a good chance that as someone progresses through this type of role, they will be pushed into one track over the other depending on the demands of the organization and experience acquired (in the non-academic world, at least).

## WHAT IS NETWORKING ANYWAY? JOB SEEKING ADVICE IN GENERAL

Everyone talks about how important networking is, but it's often a vague term thrown around that can mean any number of things. Ultimately there is no one formula for networking, but there are strategies one can use to branch out and make the connections while job searching.

### 1. USE YOUR CLARK NETWORK

The students whom you have worked with during your academic career often end up in interesting fields and positions, and they are a **rich resource to tap while job hunting**. It's good to keep in touch with professors as well since they may be aware of various openings and can connect you with their past students at various organizations or businesses. Clark Geography graduates are everywhere and Clark alumni in general have a closer bond than your average college alum and they may be well suited to pass on a resume to a hiring manager. **Cultivate existing relationships from Clark as you progress into your professional career.**

### 2. USE LINKEDIN

A lot of job hunting revolves around perusing different job search engines or company websites. While websites like Feedly can help aggregate search results to your email inbox, it's still challenging to break the often anonymous experience of what can be job application agony, especially when organizations have not posted a position yet or rely on recommendations. Instead of searching for open positions, **search your current LinkedIn network** to see where your classmates work and what their connections are. This is a good way to see if a company is interesting and to get insider details on any potential hiring.

### 3. GO TO CONFERENCES AND GIVE PRESENTATIONS

Both before and after landing a job, take opportunities to attend conferences or seminars and give presentations. Lightning talks (5 minute presentation with 20 slides automatically changing every 15 seconds) especially help provide notoriety...”

(continued on next page)

# CAREERS IN GEOGRAPHY

(continued from page 19)

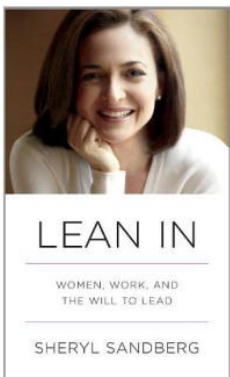
## 4. INTERVIEW. A LOT.

"Even if you stumble across your dream job and you're qualified for it, if you don't have practice interviewing then chances are you won't land it. Do research on a company beforehand and **don't be afraid to interview your interviewers**. At the end of the day, it's really a conversation, and people love talking about themselves. **Always write thank you notes** and avoid screw-ups like misspelled names.

## 5. DON'T TAKE THE FIRST JOB OFFER THAT COMES AROUND.

If you are over qualified for a position, or it does not offer good potential to grow, or it has too low of a starting salary, **it's okay to consider passing it up**. Starting salary is important, and future job salaries or raises may depend on how much your first position pays.

## INTERESTING READING MATERIAL

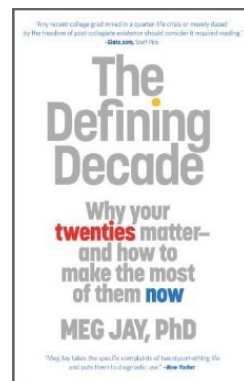


**Lean In**, by Cheryl Sandberg, COO of Facebook.

While some find this book controversial, it has interesting insights into getting ahead in a work environment for both men and women.

**The Defining Decade**, by Meg Jay

This book debunks the myth that 30 is the new 20 for professional as well as relationship development. It helps 20-somethings think about post-college life in a constructive manner and deal with what can be seem like a limitless (and paralyzing) suite of job, grad school, career options."



A very special thank you to Rachel Shmookler for putting this feature together!

**Rachel Shmookler** graduated from Clark with a B.A. in Environmental Science in 2009 and an M.A. from the **5<sup>th</sup> year GIS program** in 2010. Rachel was a fellow of the **HERO program** in 2008-2009 and completed a senior thesis on Asian longhorn beetle distribution modeling, and a Master's thesis on modeling future trends in water use for the Boston metropolitan area. Since leaving Clark, Rachel has worked for over four years as a **GIS Analyst at RPS Applied Science Associates (RPS ASA)**, an environmental consulting firm in southern Rhode Island, performing GIS analysis, scientific modeling, data management, web development, and programming. She has worked on a variety of projects in the coastal and marine environment including coastal hazard assessments, marine spatial planning, environmental impact assessments, and renewable energy siting, and she is a **project manager** for developing data and tools to analyze marine vessel traffic.





# UPDATES & EVENTS

## DATES TO REMEMBER

### September 3rd

Colloquium: Laura Ogden  
Dartmouth College

### September 17th

Colloquium: Sucharita Gopal  
Boston University

### October 15th

Wallace W. Atwood lecture:  
Dr. Eric Lambin, Stanford University

### October 29th

Colloquium: Priscilla McCutcheon  
University of Louisville

### November 12th

Colloquium: Pablo Rose  
University of Vermont

### November 19th

Colloquium: Bruce Braun  
University of Minnesota

Be sure to check our Events website for details, updates and announcements of events throughout the academic year!

Find us at:

[clarku.edu/departments/geography/newsevents/index.cfm](http://clarku.edu/departments/geography/newsevents/index.cfm)



## geog WORKSTUDY jobs

APPLY NOW

••••• NOW • HIRING •••••

The Geography Department is now hiring work-study students for the 2015-16 academic year for the following positions:

### GEOGRAPHY OFFICE ASSISTANT

Seeking Geography, GES, or ESS students to work as office assistants in the main Geography Office [Jefferson 220] for the upcoming academic year.

### GIS SUPPORT ASSISTANT

Seeking experienced GIS students to work at our "GIS Help Desk" in the main Geography Office [Jefferson 220] for the upcoming academic year. Students must have taken GEOG 190 [Intro to GIS] and GEOG 290 [Advanced Vector GIS] to be eligible for the position.

\*OPPORTUNITIES FOR STUDENTS WITH WORK-STUDY AWARDS ONLY\*

CONTACT RACHEL LEVITT ( UNDERGRADUATE PROGRAM COORDINATOR )  
FOR MORE INFORMATION: [RLevitt@clarku.edu](mailto:RLevitt@clarku.edu)

## HELP WANTED

Are you looking for a job for the upcoming academic year? Do you have work-study? Are you a Geography, GES or ESS major? Apply to work in the Main Geography Office! We are now hiring for the following positions, to begin in Fall 2015:

### Geography Office Assistant

Seeking a Geography, GES, or ESS student to work at the desk in the main Geography office (Jefferson 220) during the academic year of 2015-2016. Student will be responsible for miscellaneous office duties such as copying, scanning, filing, sorting mail, ordering office supplies. May be responsible for delivering/transporting items around campus and for other administrative tasks (word processing, creating PowerPoints/spreadsheets, etc.). Approximately 8-10 hours per week between the hours of 9am and 5pm. Additional hours may be available.

### GIS Support Assistant

Seeking a Geography student to work at our "GIS Help Desk" to provide guidance and support to undergraduate students in the field of Geographic Information Science. Student will be responsible for advising and/or tutoring GIS students in various GIS applications (software, trouble-shooting, problem solving) and for compiling data on new/accessible GIS software and programming. Student will also be responsible for various office duties (scanning, filing, etc.) when not advising/tutoring students. Approximately 8-10 hours per week between the hours of 9am and 5pm. Additional hours may be available.

If you are interested in applying for either of these positions, please contact Rachel Levitt (email [RLevitt@clarku.edu](mailto:RLevitt@clarku.edu)) for full details and position information.

# CUGA CORNER

## CUGA CORNER

clark • undergraduate • geography • association

CUGA E-Board Members:

**Kim Johnson:** Co-President

**Hannah Rosenblum:** Co-President

**Amy Phillips:** Treasurer

**Will Heikes:** Historian

CUGA is a place for students interested in making a positive impact and for all undergraduate Geography, Global Environmental Studies (GES) and Earth Systems Science (ESS) students.



# C.U.G.A

CONTACT TO JOIN »  
[CLARKCUGA@GMAIL.COM](mailto:CLARKCUGA@GMAIL.COM)



Some CUGA Members on a recent group hiking trip to the Cascading Waters trail (Greater Worcester Land Trust) in April 2015

Amy Phillips, Madilyn Jacobsen, Ali Filipovic, Gabe Epstein, Warren Scott and Will Heikes





# CLARK UNIVERSITY



School of Geography | Clark University  
Jefferson Academic Center Room 220  
950 Main Street | Worcester, MA 01610-1477  
[geography@clarku.edu](mailto:geography@clarku.edu)  
p: 508.793.7336 | fax: 508.793.8881



Find us on Facebook:

[facebook.com/clarkuniversitygeography](https://facebook.com/clarkuniversitygeography)

A digital version of this newsletter can be found at  
[clarku.edu/departments/geography/about/newsletters.cfm](http://clarku.edu/departments/geography/about/newsletters.cfm)

Issue published June 2015

Questions / Comments / Suggestions:

Contact Rachel Levitt at [RLevitt@clarku.edu](mailto:RLevitt@clarku.edu)